

DURAY[®]

Intraoral Sensor

The digital solution you've been looking for!



Introducing Duray Intraoral sensors – a durable, reliable, and affordable digital intraoral imaging solution.

With just a 4.4mm profile and a theoretical resolution of 25 lp/mm, image quality is exceptional while ensuring easy positioning and maximum comfort for the patient. Installation is simple and straightforward with a plug-and-play design, and image processing specifications can be customized to meet your practice needs for enhanced diagnosis.

Integrate Duray intraoral sensors seamlessly into your practice today and experience sharper, more detailed images with simplicity.

DURAY®



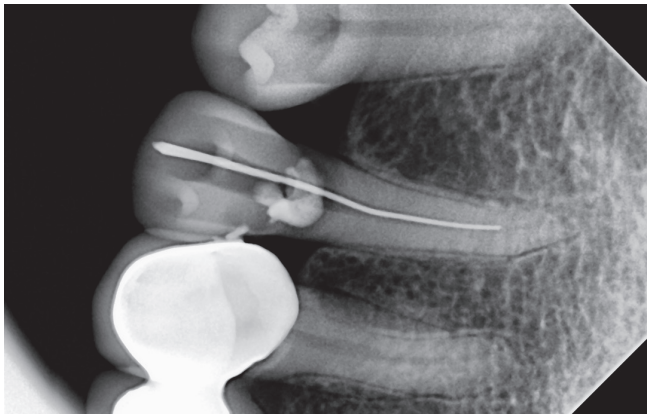
DURABLE AND RELIABLE

Made with premium materials and rigorously tested during production processes to ensure high-quality performance standards. Duray Sensor is waterproof with an IP68 rating and can be immersed in disinfectant liquids to prevent cross infections and enhance hygiene and safety. In addition, our sensor housing is designed to be shock-resistant to protect from shock, bites, and falls to ensure durability and long product life cycle.



THIN AND COMFORTABLE

With an ultra-thin 4.4mm portfolio and ergonomically designed with rounded corners makes it easier than ever to position for bitewing images and offers maximum level of patient comfort.



HIGH RESOLUTION IMAGING

With a theoretical resolution of 25 lp/mm and through advanced CMOS technology, image quality is optimized and exceptional, and noise is reduced, producing crisp, detailed images for immediate review and diagnosis.



EASY TO USE

Duray Sensor provides simple and easy-to-operate software with one-click smart installation and offers plug-and-play simplicity with high-speed USB 2.0 connection. Equipped with powerful image processing functions, so you can significantly and quickly improve the quality of radiographs.

Key Specifications

| | DURAY DS1 | DURAY DS2 |
|--|---|-----------------------------------|
| Outer dimensions of the sensor (length x width x thickness) | 38.5 x 25 x 4.5mm | 40 x 31 x 4.5mm |
| Sensitive surface | 30 x 20 mm (600 mm ²) | 36 x 26 mm (936 mm ²) |
| Surface in pixels | 1500 x 1000 pixels | 1800 x 1300 pixels |
| Weight | 118g | 158g |
| Sensor technology | CMOS | CMOS |
| Sensor resolution | > 20 lp/mm | > 20 lp/mm |
| Sensor cable length | 3 m | 3 m |
| Grey levels | 16 bits (16384 grey levels) | 16 bits (16384 grey levels) |
| Connexion (Standard USB) | USB 2.0 High-Speed (480Mbit/s) and USB 3.0. | |
| Physical pixel size | 20µm | 20µm |
| Measured resolution | 16 lp/mm | 16 lp/mm |
| Theoretical resolution | 25 lp/mm | 25 lp/mm |
| Warranty | h | 24 months |

PROVEN IMAGE SHARPNESS



Regular



Zoom

Order Information

| Order Code | Model / Description |
|------------|--|
| DS1001 | DS1, Duray Sensor Size 1 Kit |
| DS2001 | DS2, Duray Sensor Size 2 Kit |
| DS3001 | Duray Sensor Package (Includes size 1 & size 2 kits) |
| DS1003 | Sensor Sleeve, Size 1 (100/package), 4X22cm |
| DS1004 | Sensor Sleeve, Size 2 (100/package), 5X22cm |
| DS1006 | Sensor Silicone Sleeve, Size 1 |
| DS1007 | Sensor Silicone Sleeve, Size 2 |
| DS1101 | Sensor Plate Holder Bitewing Kit, Size 1 |
| DS1102 | Sensor Plate Holder Bitewing Kit, Size 2 |



Duray Sensor Plate Holder Bitewing Kit

Package includes:

| | |
|--------------------------|--------------------------|
| 1 x Bitewing holder | 1 x Positioning ring |
| 1 x Posterior holder UL | 1 x Posterior holder UR |
| 1 x Periapical holder UL | 1 x Periapical holder UR |
| 1 x Endo holder UL | 1 x Endo holder UR |

Positioning ring:

Rotate sensor holder to change position and use the other fixation point of positioning ring.



| BITEWING | | PERIAPICAL | | POSTERIOR | | ENDO | |
|----------|-------|------------|-------|-----------|-------|-------|-------|
| LEFT | RIGHT | UR/LL | UL/LR | UR/LL | UL/LR | UR/LL | UL/LR |
| | | | | | | | |
| | | | | | | | |



Beyes Dental Canada Inc.
 23-595 Middlefield Road
 Toronto, Ontario, M1B 3M5
 Canada
Tel: 1-855-603-1888
Email: info@beyes.ca
Web: www.beyes.ca

Lotus NL B.V.
 Koningin Julianaplein 10, le Verd,
 2595AA, The Hague,
 Netherlands
Tel: +31645171879 (English)
 +31626669008 (Dutch)
Email: info@beyes.ca

Your Dealer for Beyes Products

Scan the QR code for more products



Printed in Canada
 File #: ENB040
 Rev.1/17.11.21

© Beyes Canada Inc 2021. All Rights Reserved.
 Specifications are subject to change without notice.
 All brands are holders of their respective trademarks.
 All Beyes products are manufactured in strict compliance with Health Canada regulations ensuring quality.
 Manufacturing facility is ISO 13485 certified under Canadian Medical Devices Conformity Assessment System (CMDCAS).